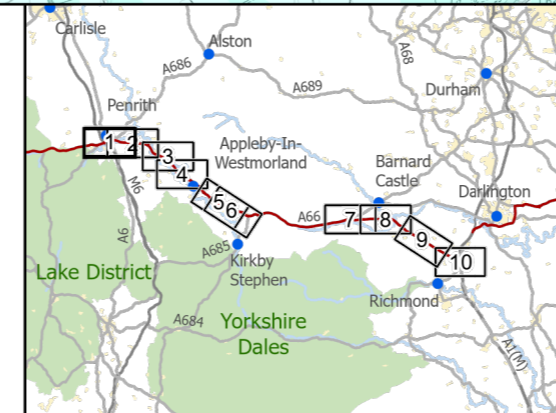


- Route Alignment
- Existing A66
- Order Limits
- Study Area 2000m
- LIDAR and OS enclosed depressions (m) - 2km boundary
- 0.011 - 0.1
- 0.101 - 1
- 1.001 - 2
- 2.001 - 19.39
- BGS 1:50k Bedrock
- Alston Formation - Mudstone Sandstone and Siltstone
- Alston Formation - Sandstone

- Belah Dolomite
- Brockram Breccia
- Crag Limestone
- Eden Shales
- Evaporite - Gypsum
- Four Fathom Limestone
- Great Limestone Member
- Little Limestone
- Penrith Sandstone
- St Bees Sandstone Member
- Stainmore Formation - Mudstone, Siltstone and Sandstone
- Three Yard Limestone



**national highways**

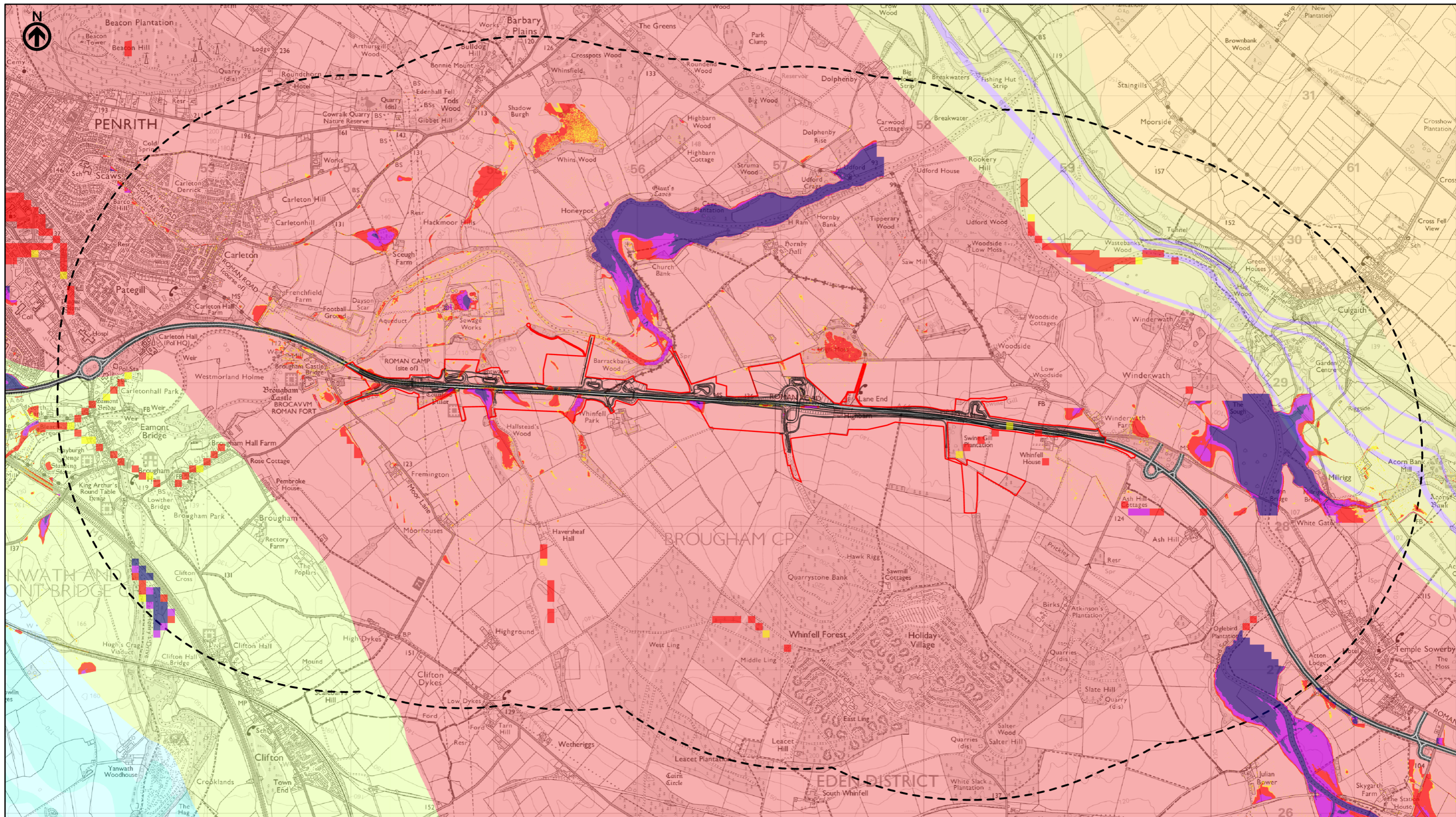
3 Piccadilly Place  
Manchester  
M1 3BN

P02	First Issue				
	CESL	LHAN	MBRE	AMIT	KWHA
	29/03/22	29/03/22	29/03/22	26/04/22	26/04/22
Revision	Created	Checked	Reviewed	Approved	Authorised

Scale @ A3: 1:25,000 | Project Ref No HE565627 | Stage: Stage 3  
© Crown copyright and database rights (2022). All rights reserved. OS 100030649.  
Contains public sector information licensed under the Open Government Licence  
Contains British Geological Survey materials © UKRI 2022

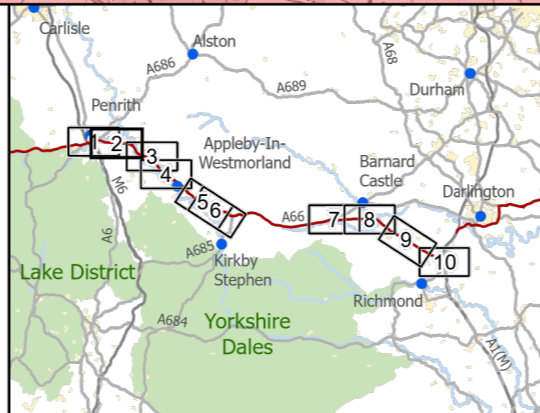
Project Name <b>A66 Northern Trans-Pennine Project</b>			
Map Title <b>Figure 14.8.4</b>			
LIDAR Enclosed Depressions Scheme: 0102, M6 Junction 40 to Kemplay Bank			
Sheet 1 of 10			
Map Number Project	Originator	Volume	
HE565627	AMY	EWE	
S00	MP	LD	011290
Location	Type	Role	Number
Suitability S4	Suitability Description FIT FOR STAGE APPROVAL		Revision P02





- Route Alignment
- Existing A66
- Order Limits
- Study Area 2000m
- LIDAR and OS enclosed depressions (m) - 2km boundary
- 0.011 - 0.1
- 0.101 - 1
- 1.001 - 2
- 2.001 - 19.39
- BGS 1:50k Bedrock
- Alston Formation - Mudstone Sandstone and Siltstone
- Alston Formation - Sandstone

- Belah Dolomite
- Brockram Breccia
- Crag Limestone
- Eden Shales
- Evaporite - Gypsum
- Four Fathom Limestone
- Great Limestone Member
- Little Limestone
- Penrith Sandstone
- St Bees Sandstone Member
- Stainmore Formation - Mudstone, Siltstone and Sandstone
- Three Yard Limestone



**national highways**

3 Piccadilly Place  
Manchester  
M1 3BN

P02	First Issue	CESL	LHAN	MBRE	AMIT	KWHA
		29/03/22	29/03/22	29/03/22	26/04/22	26/04/22
Revision	Created	Checked	Reviewed	Approved	Authorised	

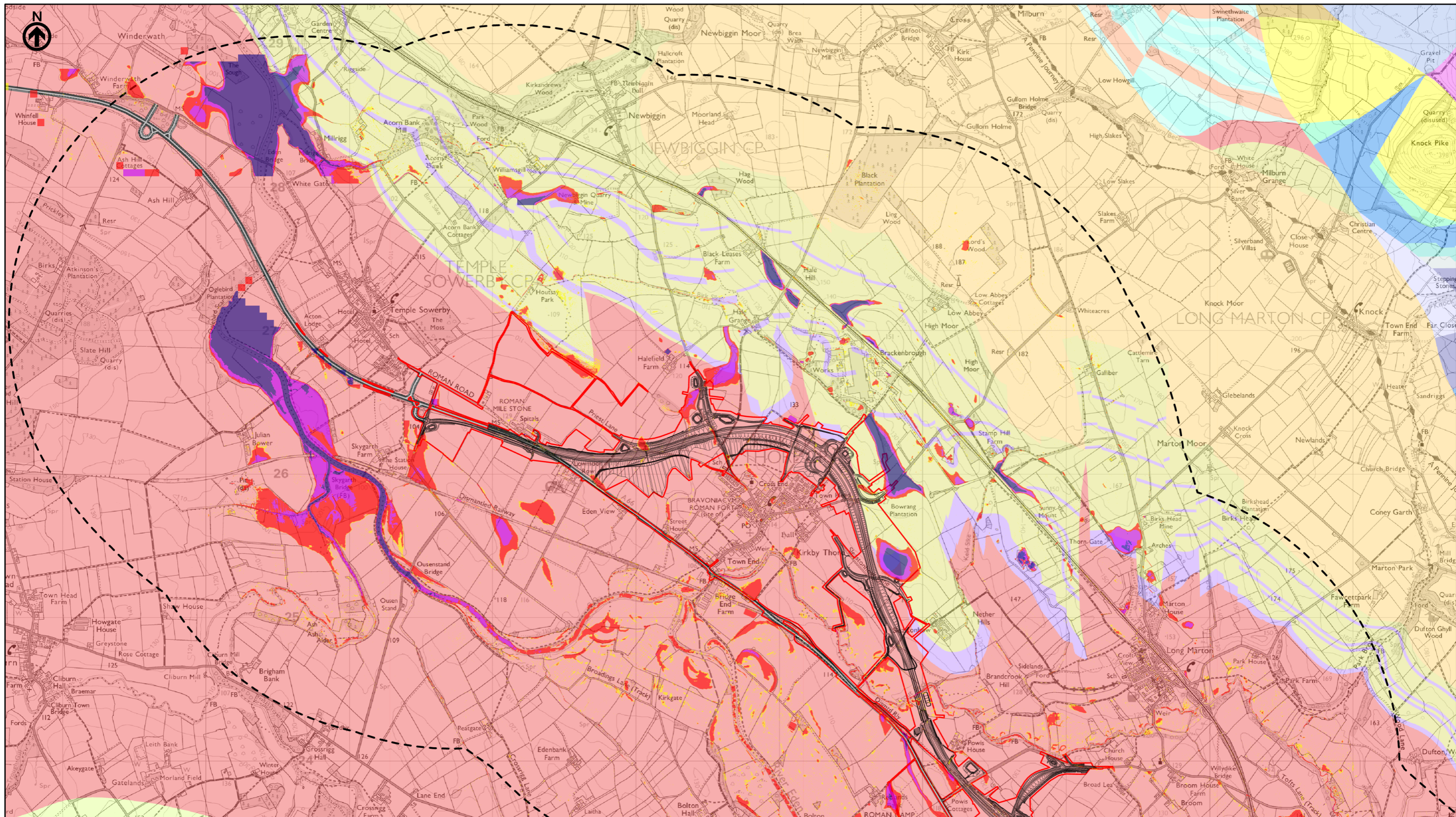
Kilometres

Scale @ A3: 1:25,000 | Project Ref No HE565627 | Stage: Stage 3

© Crown copyright and database rights (2022). All rights reserved. OS 100030649.  
Contains public sector information licensed under the Open Government Licence  
Contains British Geological Survey materials © UKRI 2022

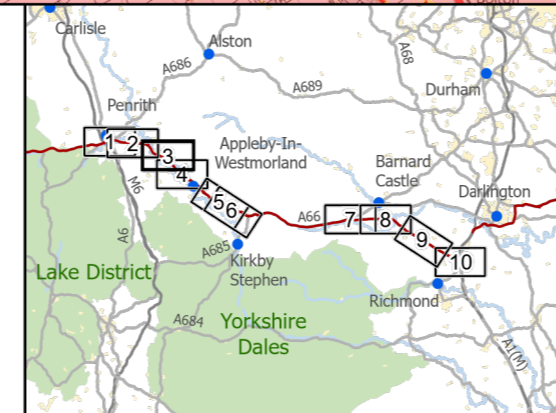
Project Name <b>A66 Northern Trans-Pennine Project</b>			
Map Title <b>Figure 14.8.4</b>			
Scheme: 03, Penrith to Temple Sowerby			
Sheet 2 of 10			
Map Number	Project	Originator	Volume
HE565627	-	AMY	- EWE
S00		MP - LD - 011291	
Location		Type	Role   Number
Suitability	Suitability Description		Revision
S4	FIT FOR STAGE APPROVAL		P02





- Route Alignment
- Existing A66
- Order Limits
- Study Area 2000m
- LIDAR and OS enclosed depressions (m) - 2km boundary
- 0.011 - 0.1
- 0.101 - 1
- 1.001 - 2
- 2.001 - 19.39
- BGS 1:50k Bedrock
- Alston Formation - Mudstone Sandstone and Siltstone
- Alston Formation - Sandstone

- Belah Dolomite
- Brockram Breccia
- Crag Limestone
- Eden Shales
- Evaporite - Gypsum
- Four Fathom Limestone
- Great Limestone Member
- Little Limestone
- Penrith Sandstone
- St Bees Sandstone Member
- Stainmore Formation - Mudstone, Siltstone and Sandstone
- Three Yard Limestone



**national highways**

3 Piccadilly Place  
Manchester  
M1 3BN

P02	First Issue				
	CESL	LHAN	MBRE	AMIT	KWHA
	29/03/22	29/03/22	29/03/22	26/04/22	26/04/22
Revision	Created	Checked	Reviewed	Approved	Authorised

Kilometres

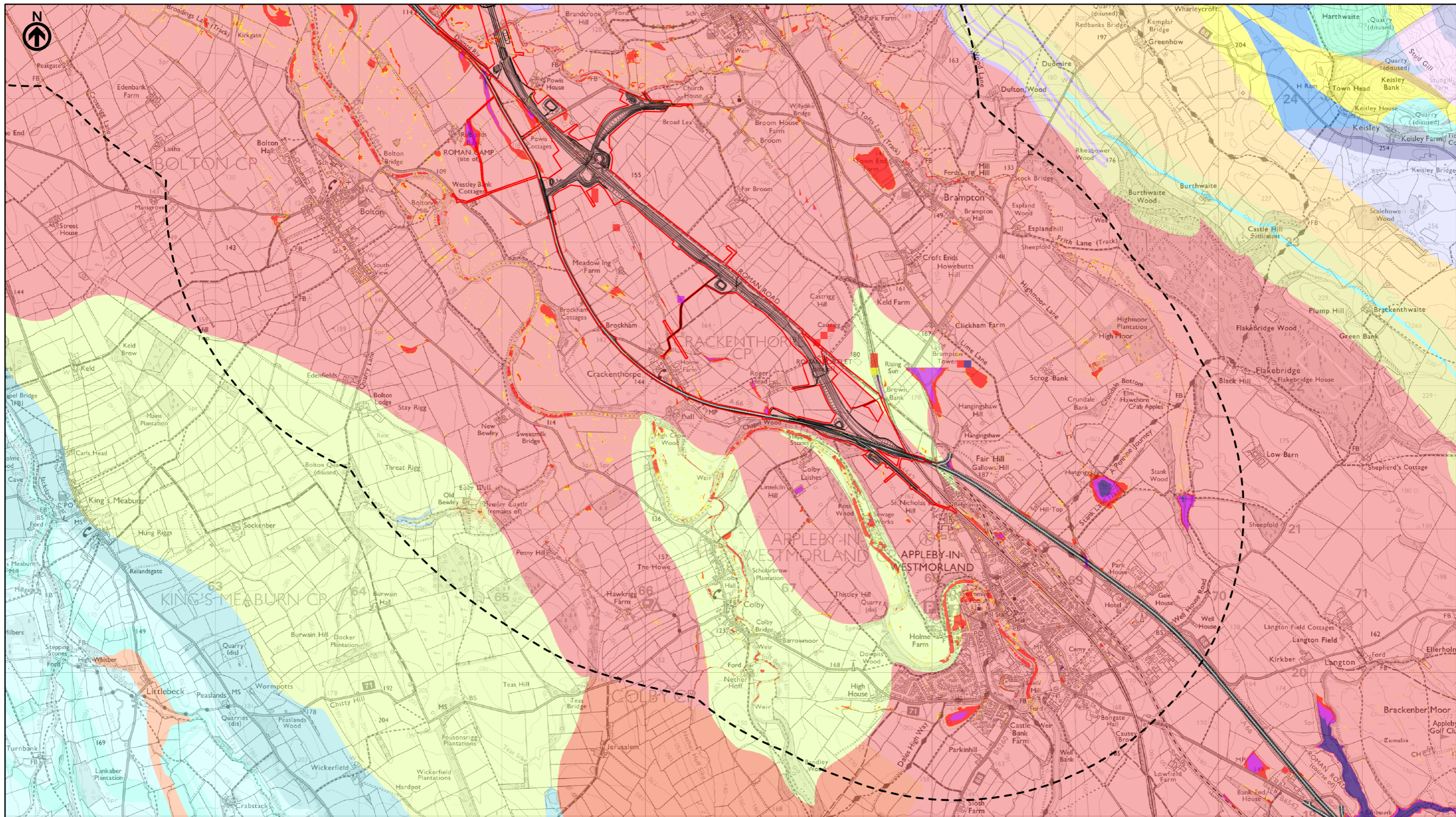
0 1 2

Scale @ A3: 1:25,000 | Project Ref No HE565627 | Stage: Stage 3

© Crown copyright and database rights (2022). All rights reserved. OS 100030649.  
Contains public sector information licensed under the Open Government Licence  
Contains British Geological Survey materials © UKRI 2022

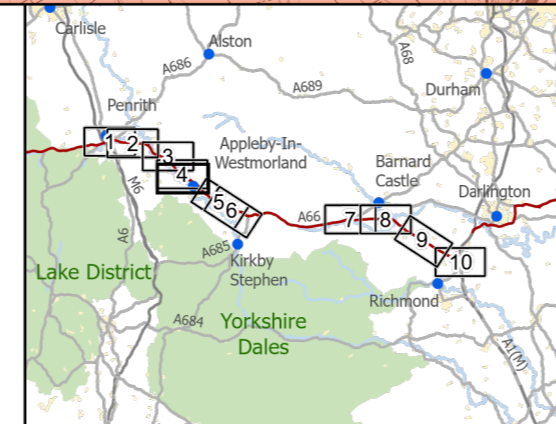
Project Name <b>A66 Northern Trans-Pennine Project</b>			
Map Title <b>Figure 14.8.4</b>			
LIDAR Enclosed Depressions			
Scheme: 0405, Temple Sowerby to Appleby			
Sheet 3 of 10			
Map Number Project	Originator	Volume	
HE565627	AMY	EWE	
S00	MP	LD	011292
Location	Type	Role	Number
Suitability S4	Suitability Description <b>FIT FOR STAGE APPROVAL</b>		Revision P02





- Route Alignment
- Existing A66
- Order Limits
- Study Area 2000m
- LIDAR and OS enclosed depressions (m) - 2km boundary
- 0.011 - 0.1
- 0.101 - 1
- 1.001 - 2
- 2.001 - 19.39
- BGS 1:50k Bedrock
- Alston Formation - Mudstone Sandstone and Siltstone
- Alston Formation - Sandstone

- Belah Dolomite
- Brockram Breccia
- Crag Limestone
- Eden Shales
- Evaporite - Gypsum
- Four Fathom Limestone
- Great Limestone Member
- Little Limestone
- Penrith Sandstone
- St Bees Sandstone Member
- Stainmore Formation - Mudstone, Siltstone and Sandstone
- Three Yard Limestone



**national highways** 3 Piccadilly Place  
Manchester M1 3BN

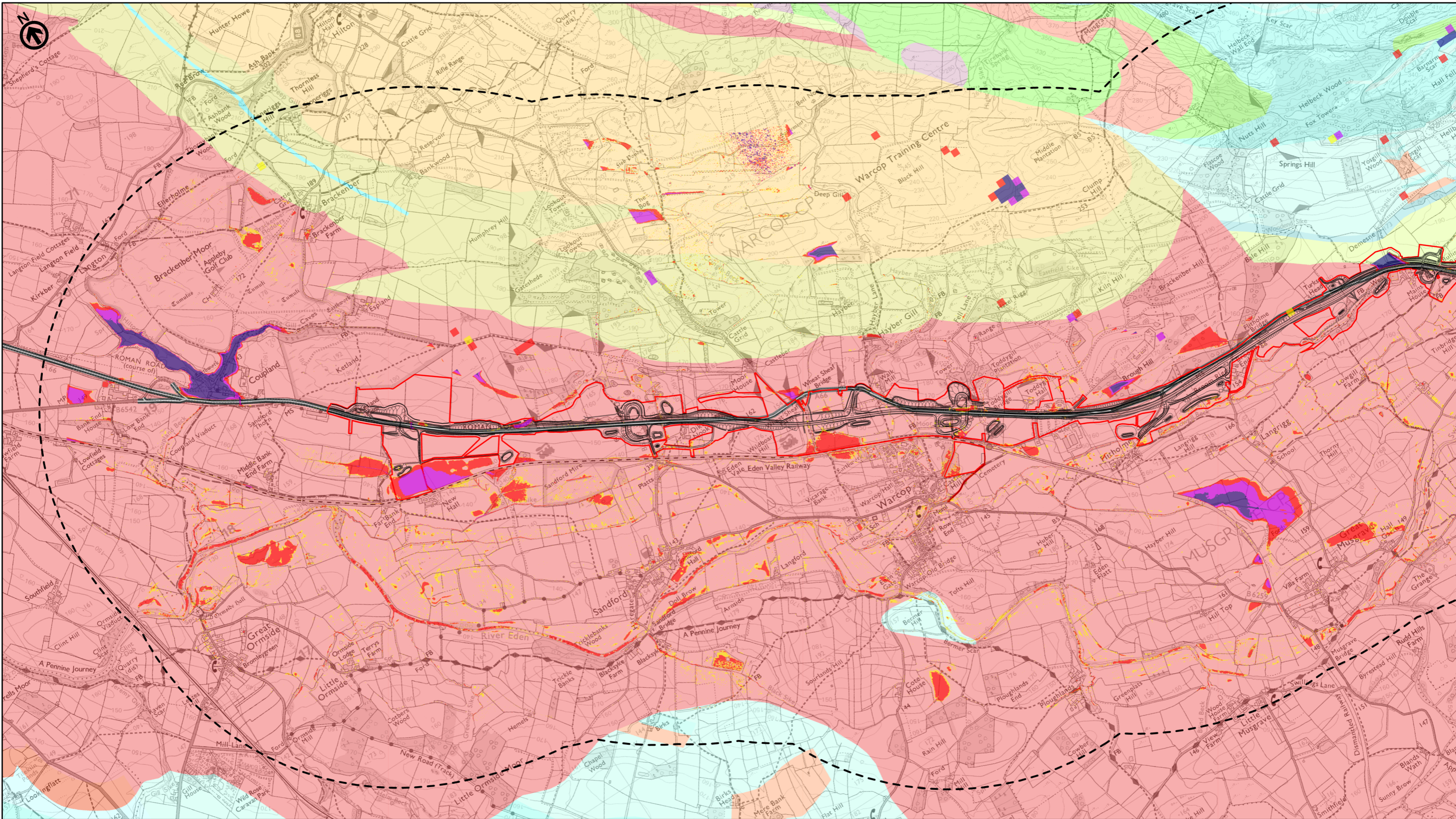
P02	First Issue				
	CESL	LHAN	MBRE	AMIT	KWHA
	29/03/22	29/03/22	29/03/22	26/04/22	26/04/22
Revision	Created	Checked	Reviewed	Approved	Authorised

Kilometres  
0 1 2

Scale @ A3: 1:25,000 | Project Ref No HE565627 | Stage: Stage 3  
© Crown copyright and database rights (2022). All rights reserved. OS 100030649.  
Contains public sector information licensed under the Open Government Licence  
Contains British Geological Survey materials © UKRI 2022

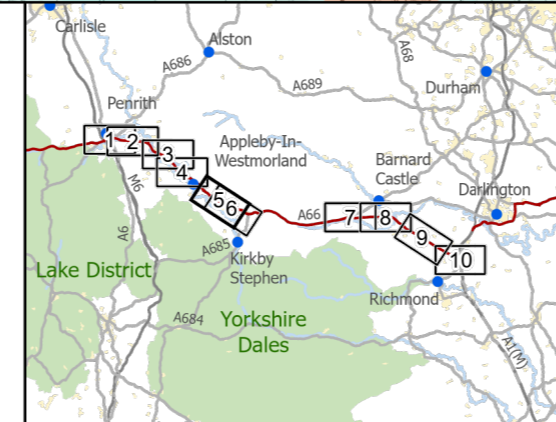
Project Name <b>A66 Northern Trans-Pennine Project</b>			
Map Title <b>Figure 14.8.4</b>			
LIDAR Enclosed Depressions			
Scheme: 0405, Temple Sowerby to Appleby			
Sheet 4 of 10			
Map Number Project	Originator	Volume	
HE565627	AMY	EWE	
S00	-	MP - LD -	011293
Location	Type	Role	Number
Suitability S4	Suitability Description FIT FOR STAGE APPROVAL		Revision P02





- Route Alignment
- Existing A66
- - - Order Limits
- - - Study Area 2000m
- LIDAR and OS enclosed depressions (m) - 2km boundary
- 0.011 - 0.1
- 0.101 - 1
- 1.001 - 2
- 2.001 - 19.39
- BGS 1:50k Bedrock
- Alston Formation - Mudstone Sandstone and Siltstone
- Alston Formation - Sandstone

- Belah Dolomite
- Brockram Breccia
- Crag Limestone
- Eden Shales
- Evaporite - Gypsum
- Four Fathom Limestone
- Great Limestone Member
- Little Limestone
- Penrith Sandstone
- St Bees Sandstone Member
- Stainmore Formation - Mudstone, Siltstone and Sandstone
- Three Yard Limestone



**national highways**

3 Piccadilly Place  
Manchester  
M1 3BN

P02	First Issue	CESL	LHAN	MBRE	AMIT	KWHA
		29/03/22	29/03/22	29/03/22	26/04/22	26/04/22
Revision	Created	Checked	Reviewed	Approved	Authorised	

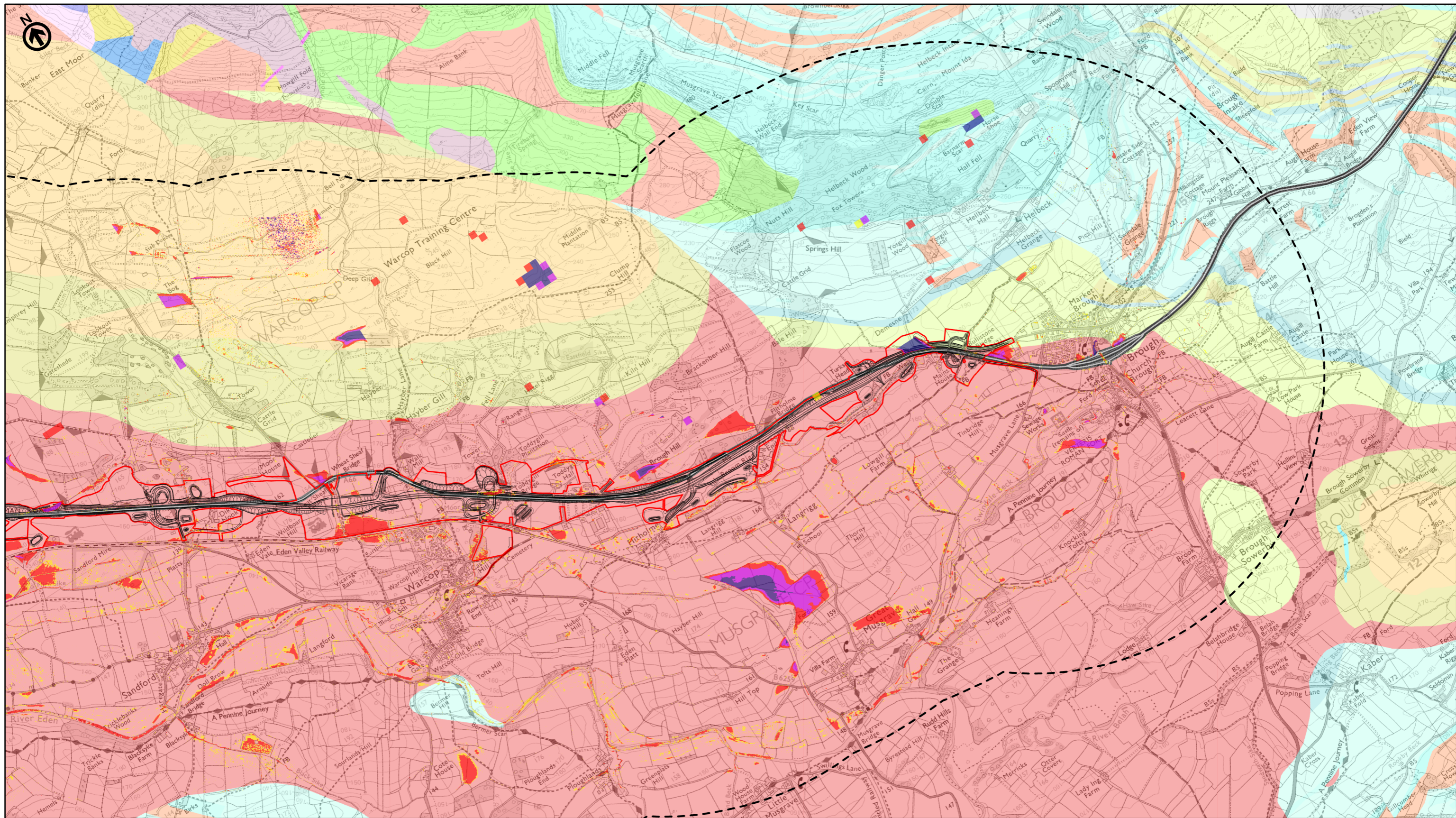
Kilometres

Scale @ A3: 1:25,000 | Project Ref No HE565627 | Stage: Stage 3

© Crown copyright and database rights (2022). All rights reserved. OS 100030649.  
Contains public sector information licensed under the Open Government Licence  
Contains British Geological Survey materials © UKRI 2022

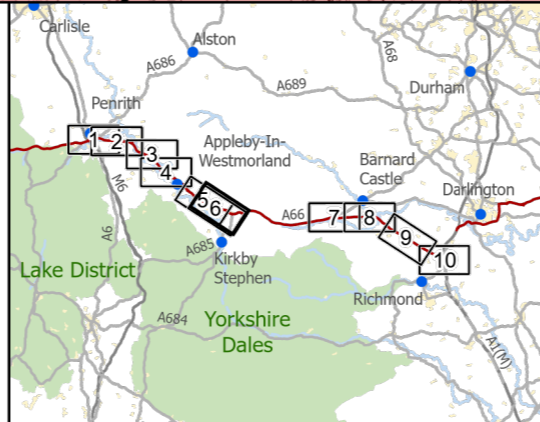
Project Name <b>A66 Northern Trans-Pennine Project</b>			
Map Title <b>Figure 14.8.4</b>			
LIDAR Enclosed Depressions			
Scheme: 06, Appleby to Brough			
Sheet 5 of 10			
Map Number	Project	Originator	Volume
HE565627	-	AMY	- EWE
S00	-	MP	- LD - 011294
Location		Type	Role   Number
Suitability	Suitability Description		Revision
S4	FIT FOR STAGE APPROVAL		P02





- Route Alignment
- Existing A66
- Order Limits
- Study Area 2000m
- LIDAR and OS enclosed depressions (m) - 2km boundary
- 0.011 - 0.1
- 0.101 - 1
- 1.001 - 2
- 2.001 - 19.39
- BGS 1:50k Bedrock
- Alston Formation - Mudstone Sandstone and Siltstone
- Alston Formation - Sandstone

- Belah Dolomite
- Brockram Breccia
- Crag Limestone
- Eden Shales
- Evaporite - Gypsum
- Four Fathom Limestone
- Great Limestone Member
- Little Limestone
- Penrith Sandstone
- St Bees Sandstone Member
- Stainmore Formation - Mudstone, Siltstone and Sandstone
- Three Yard Limestone



**national highways**

3 Piccadilly Place  
Manchester  
M1 3BN

P02	First Issue	CESL	LHAN	MBRE	AMIT	KWHA
		29/03/22	29/03/22	29/03/22	26/04/22	26/04/22
Revision	Created	Checked	Reviewed	Approved	Authorised	

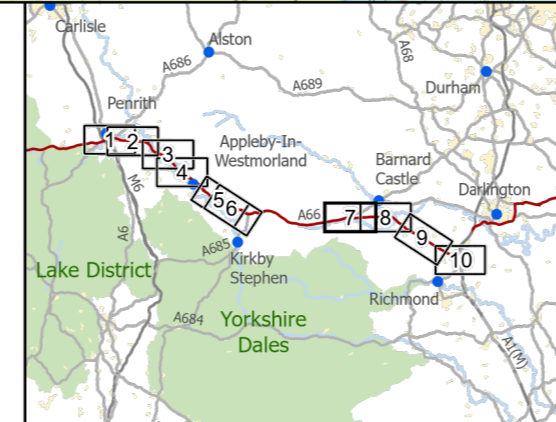
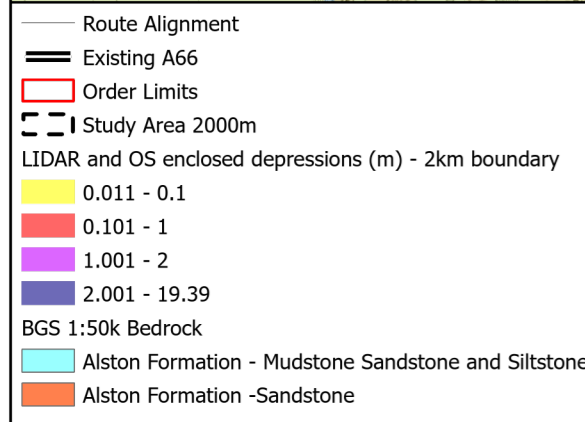
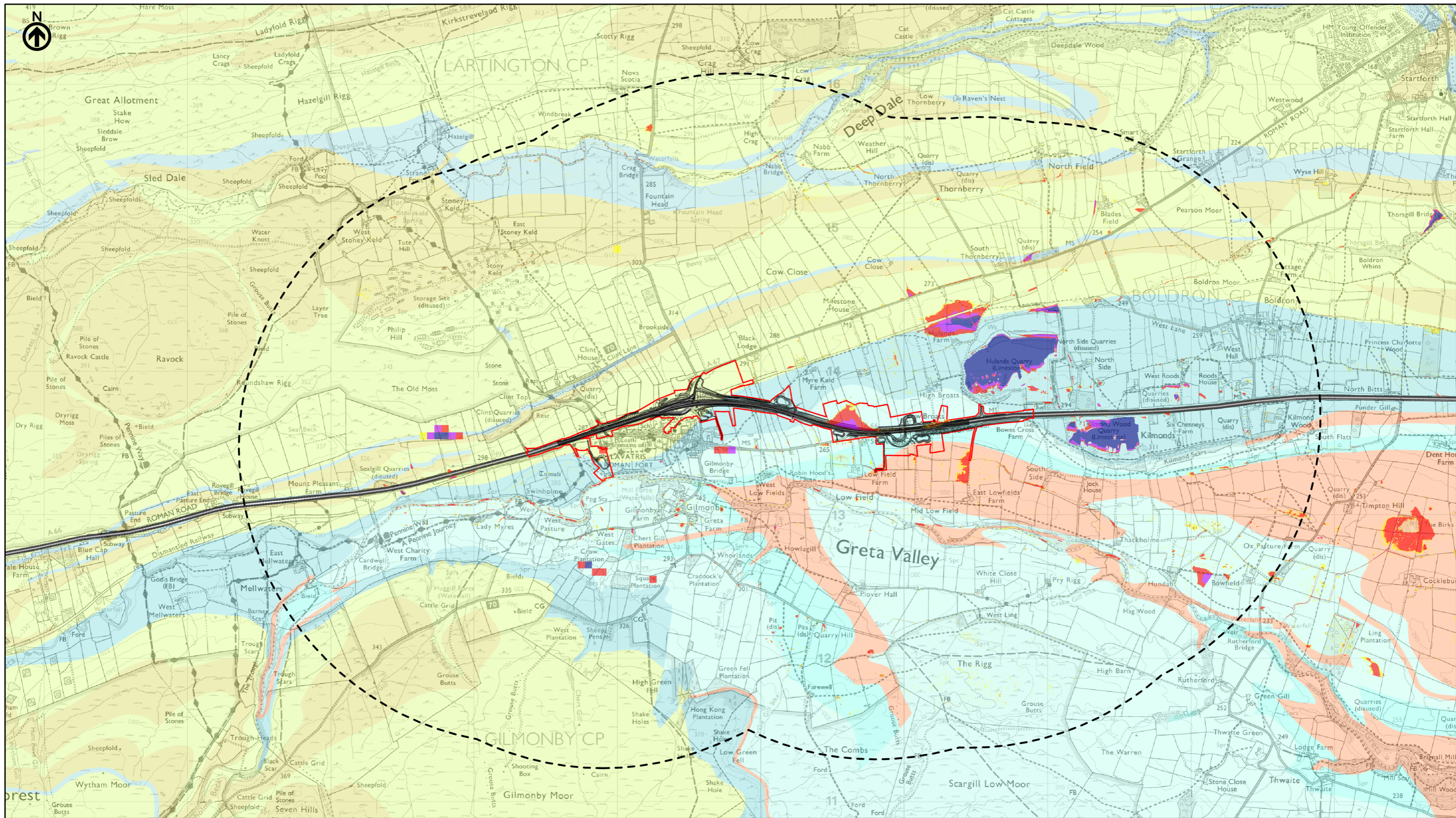
Kilometres

Scale @ A3: 1:25,000 | Project Ref No HE565627 | Stage: Stage 3

© Crown copyright and database rights (2022). All rights reserved. OS 100030649.  
Contains public sector information licensed under the Open Government Licence  
Contains British Geological Survey materials © UKRI 2022

Project Name <b>A66 Northern Trans-Pennine Project</b>			
Map Title <b>Figure 14.8.4</b>			
LIDAR Enclosed Depressions			
Scheme: 06, Appleby to Brough			
Sheet 6 of 10			
Map Number Project	Originator	Volume	
HE565627	AMY	EWE	
S00 Location	MP	LD	011295
Suitability S4	Suitability Description FIT FOR STAGE APPROVAL		Revision P02





**national highways**  
 3 Piccadilly Place  
 Manchester  
 M1 3BN

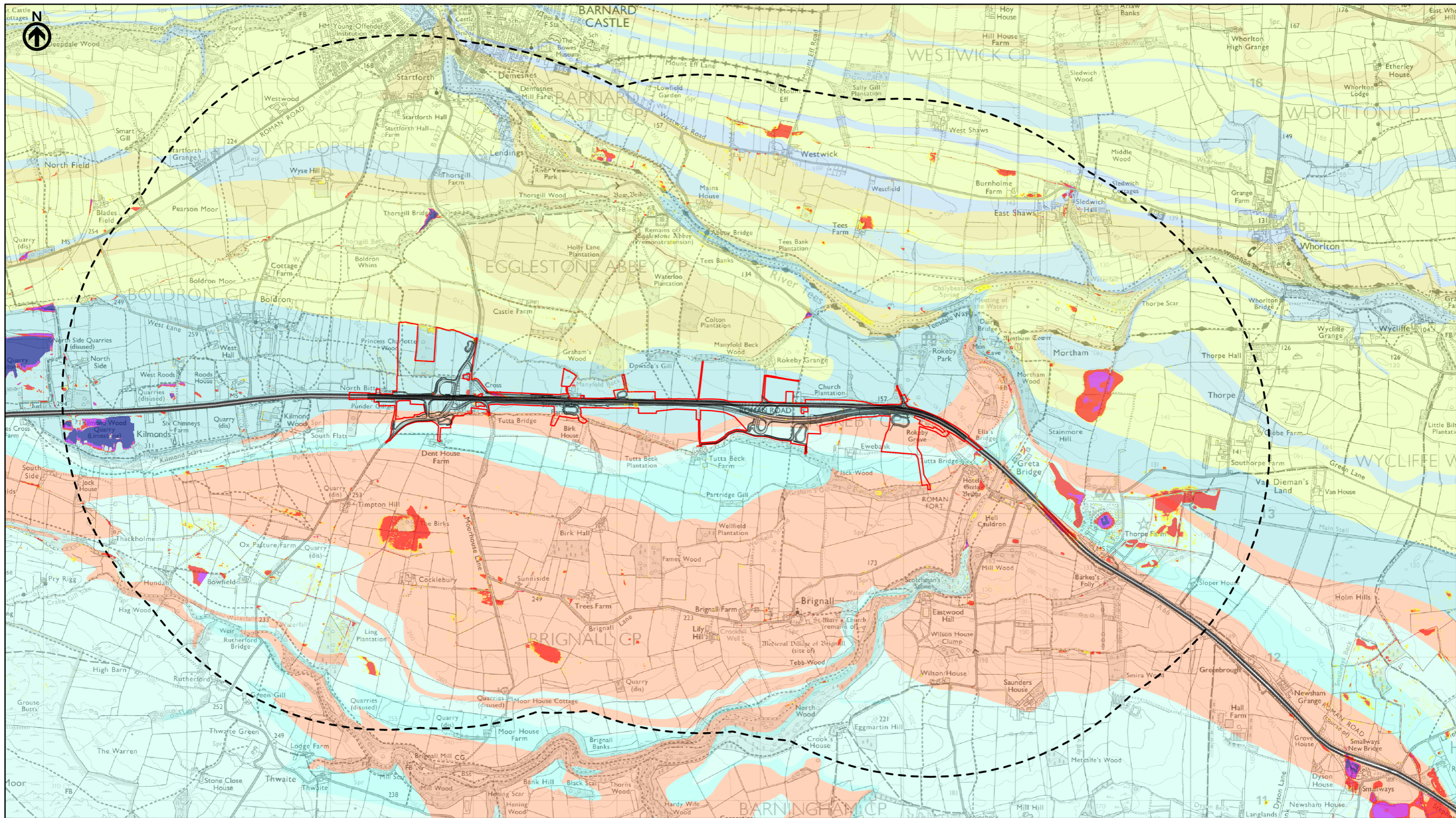
P02	First Issue	CESL	LHAN	MBRE	AMIT	KWHA
		29/03/22	29/03/22	29/03/22	26/04/22	26/04/22
Revision	Created	Checked	Reviewed	Approved	Authorised	

Kilometres  
 0 1 2

Scale @ A3: 1:25,000 | Project Ref No HE565627 | Stage: Stage 3  
 © Crown copyright and database rights (2022). All rights reserved. OS 100030649.  
 Contains public sector information licensed under the Open Government Licence  
 Contains British Geological Survey materials © UKRI 2022

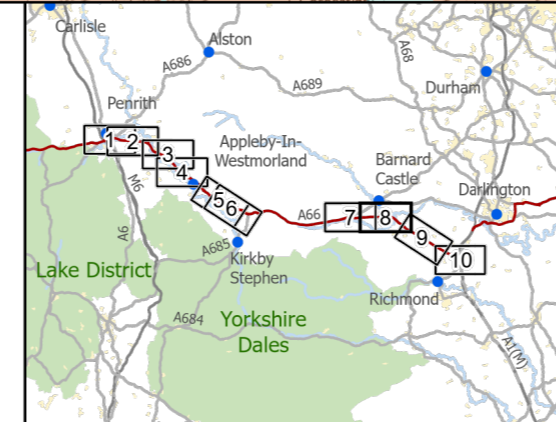
Project Name <b>A66 Northern Trans-Pennine Project</b>			
Map Title <b>Figure 14.8.4</b>			
Scheme: 07, Bowes Bypass			
Sheet 7 of 10			
Map Number Project	Originator	Volume	
HE565627	AMY	EWE	
S00	-	MP - LD -	011296
Location	Type	Role	Number
Suitability S4	Suitability Description FIT FOR STAGE APPROVAL	Revision P02	





- Route Alignment
- Existing A66
- Order Limits
- Study Area 2000m
- LIDAR and OS enclosed depressions (m) - 2km boundary
- 0.011 - 0.1
- 0.101 - 1
- 1.001 - 2
- 2.001 - 19.39
- BGS 1:50k Bedrock
- Alston Formation - Mudstone Sandstone and Siltstone
- Alston Formation - Sandstone

- Belah Dolomite
- Brockram Breccia
- Crag Limestone
- Eden Shales
- Evaporite - Gypsum
- Four Fathom Limestone
- Great Limestone Member
- Little Limestone
- Penrith Sandstone
- St Bees Sandstone Member
- Stainmore Formation - Mudstone, Siltstone and Sandstone
- Three Yard Limestone



**national highways** 3 Piccadilly Place  
Manchester M1 3BN

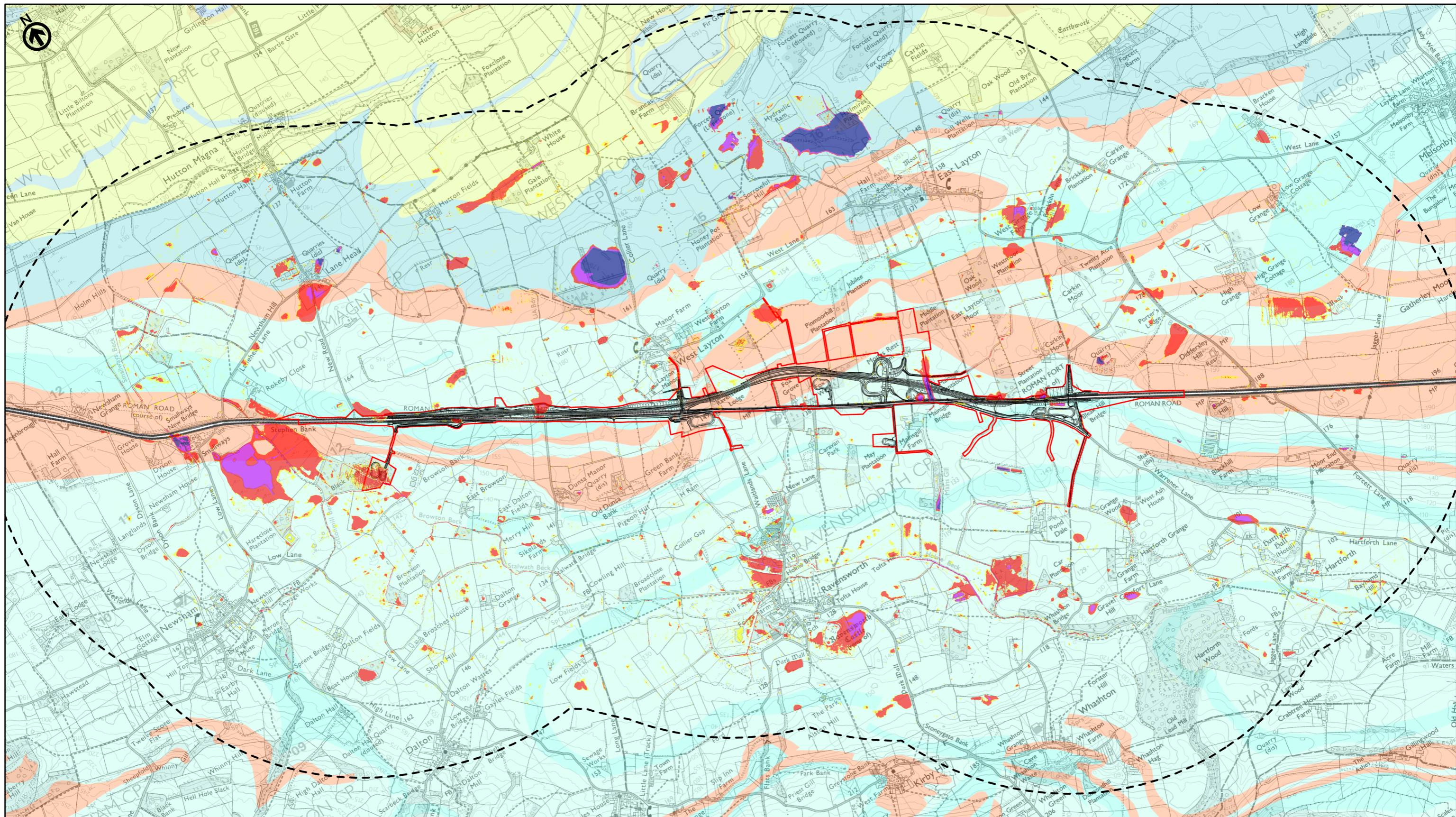
P02	First Issue				
	CESL	LHAN	MBRE	AMIT	KWHA
	29/03/22	29/03/22	29/03/22	26/04/22	26/04/22
Revision	Created	Checked	Reviewed	Approved	Authorised

Kilometres  
0 1 2

Scale @ A3: 1:25,000 | Project Ref No HE565627 | Stage: Stage 3  
© Crown copyright and database rights (2022). All rights reserved. OS 100030649.  
Contains public sector information licensed under the Open Government Licence  
Contains British Geological Survey materials © UKRI 2022

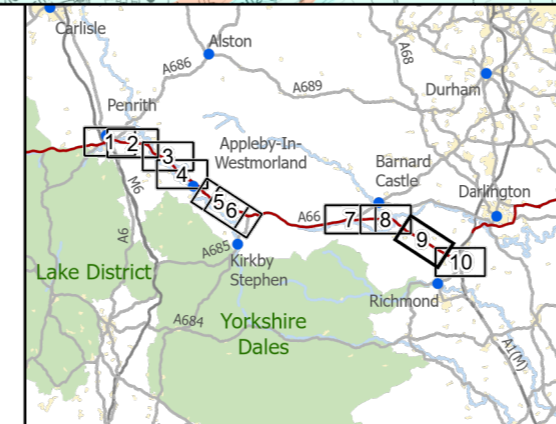
Project Name <b>A66 Northern Trans-Pennine Project</b>			
Map Title <b>Figure 14.8.4</b>			
LIDAR Enclosed Depressions			
Scheme: 08, Cross Lanes to Rokeby			
Sheet 8 of 10			
Map Number Project	Originator	Volume	
HE565627	AMY	EWE	
S00	MP	LD	011297
Location	Type	Role	Number
Suitability S4	Suitability Description FIT FOR STAGE APPROVAL		Revision P02





- Route Alignment
- Existing A66
- Order Limits
- Study Area 2000m
- LIDAR and OS enclosed depressions (m) - 2km boundary
- 0.011 - 0.1
- 0.101 - 1
- 1.001 - 2
- 2.001 - 19.39
- BGS 1:50k Bedrock
- Alston Formation - Mudstone Sandstone and Siltstone
- Alston Formation - Sandstone

- Belah Dolomite
- Brockram Breccia
- Crag Limestone
- Eden Shales
- Evaporite - Gypsum
- Four Fathom Limestone
- Great Limestone Member
- Little Limestone
- Penrith Sandstone
- St Bees Sandstone Member
- Stainmore Formation - Mudstone, Siltstone and Sandstone
- Three Yard Limestone



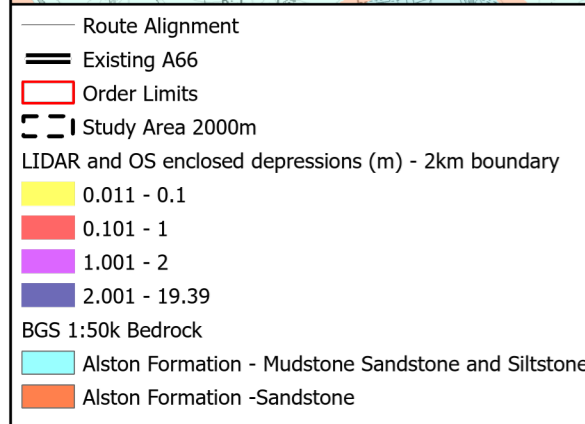
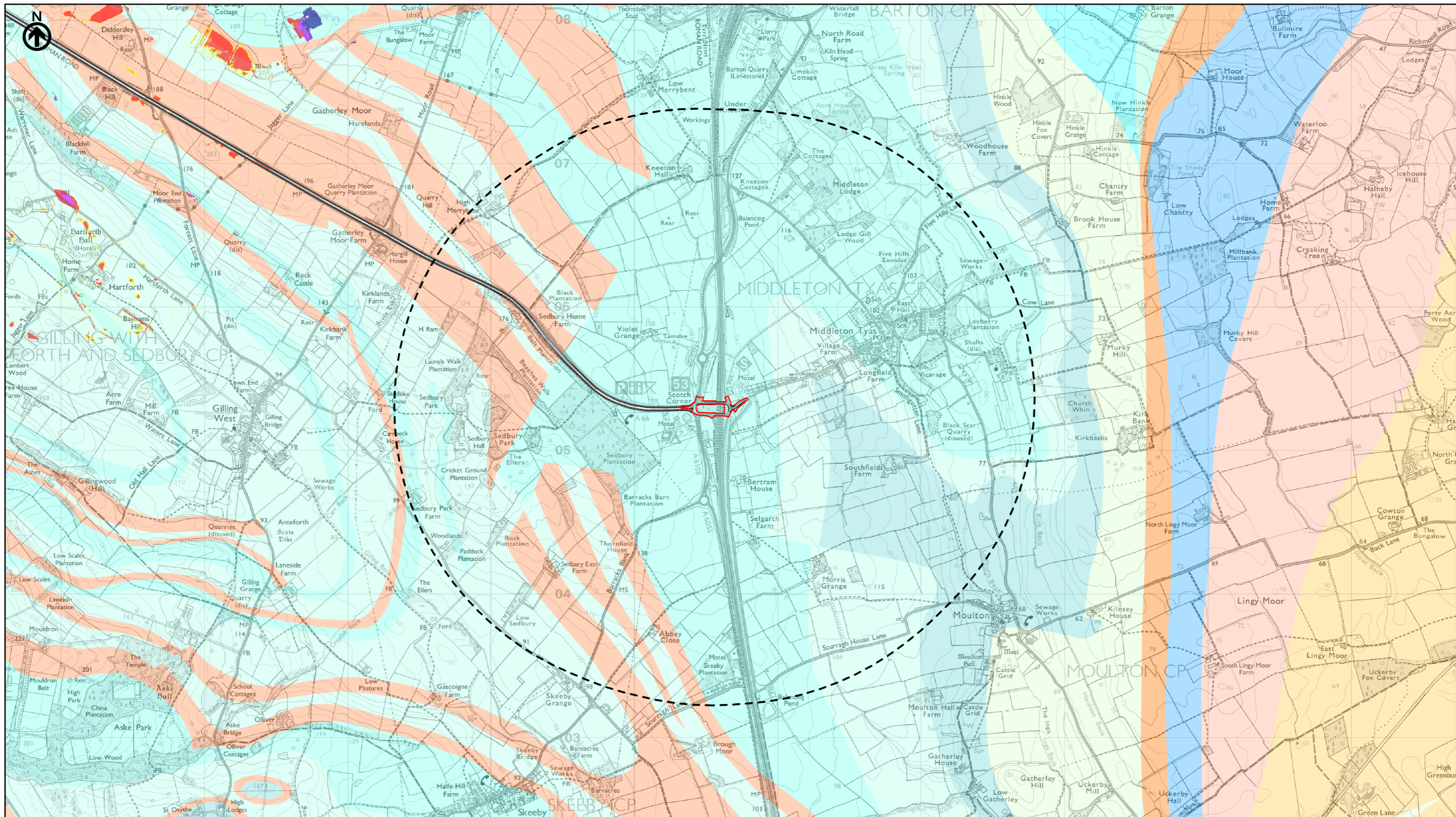
**national highways** 3 Piccadilly Place  
Manchester M1 3BN

P02	First Issue	CESL	LHAN	MBRE	AMIT	KWHA
	Created	29/03/22	29/03/22	29/03/22	26/04/22	26/04/22
Revision	Created	Checked	Reviewed	Approved	Authorised	

Scale @ A3: 1:25,000 | Project Ref No HE565627 | Stage: Stage 3  
 © Crown copyright and database rights (2022). All rights reserved. OS 100030649.  
 Contains public sector information licensed under the Open Government Licence  
 Contains British Geological Survey materials © UKRI 2022

Project Name <b>A66 Northern Trans-Pennine Project</b>			
Map Title <b>Figure 14.8.4</b>			
LIDAR Enclosed Depressions Scheme: 09, Stephen Bank to Carkin Moor			
Sheet 9 of 10			
Map Number Project	Originator	Volume	
HE565627	AMY	EWE	
S00	MP	LD	011298
Location	Type	Role	Number
Suitability S4	Suitability Description FIT FOR STAGE APPROVAL	Revision P02	





P02	First Issue	CESL	LHAN	MBRE	AMIT	KWHA
		29/03/22	29/03/22	29/03/22	26/04/22	26/04/22
Revision	Created	Checked	Reviewed	Approved	Authorised	

Kilometres

Scale @ A3: 1:25,000 | Project Ref No HE565627 | Stage: Stage 3  
 © Crown copyright and database rights (2022). All rights reserved. OS 100030649.  
 Contains public sector information licensed under the Open Government Licence  
 Contains British Geological Survey materials © UKRI 2022

**national highways**

3 Piccadilly Place  
 Manchester  
 M1 3BN

Map Number	Project	Originator	Volume
HE565627	-	AMY	- EWE
Location		Type	Role
S00		MP	LD - 011299

Suitability	Suitability Description	Revision
S4	FIT FOR STAGE APPROVAL	P02

Project Name  
**A66 Northern Trans-Pennine Project**

Map Title  
**Figure 14.8.4**

LIDAR Enclosed Depressions  
 Scheme: 11, A1(M) Junction 53 Scotch Corner  
 Sheet 10 of 10